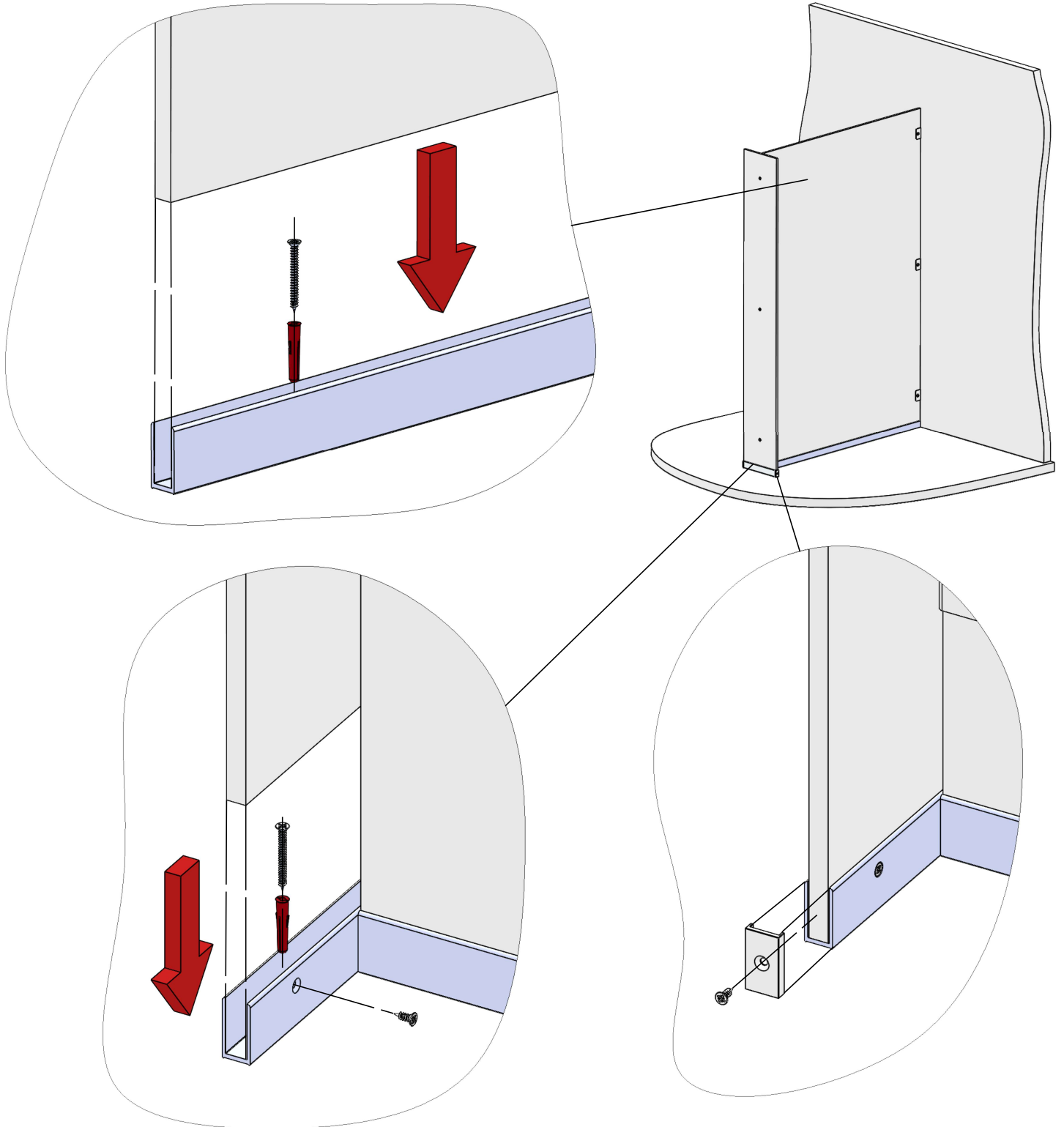


Part No.	Description	Last Updated
N/A	Floor Channels	20-01-26



#### Partition Channel

Mark the position of the Floor Channel on the floor.  
 Pre-drill 3 fixing holes down the length of the Channel base.  
 Mark the Floor fixing positions and Drill the floor using a Masonry Bit.  
 Attach the Channel to the floor using Rawl Plugs and Screws.  
 Lower the Partition into the Channel and Secure to the Wall.

#### Fascia Channel

Pre-Drill the Channel Base and Rear of the Channel for Countersunk Screws.  
 Mark the Floor Fixing Positions and Drill  
 Fix the Channel to the Floor With Screws and Rawl Plugs.  
 Lower the Fascia into the channel and secure with Countersunk Screws.  
 Screw the Capping Plates Into the side of the Fascia.